

Key Information

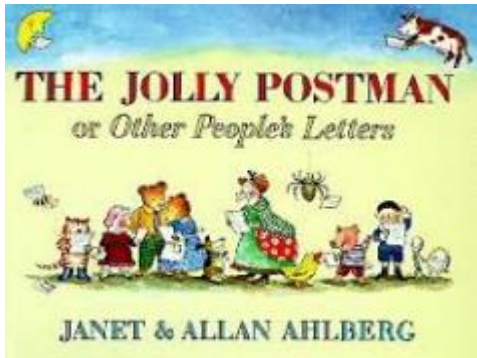
PE Day:	Tuesday and Friday
Homework out on a:	Friday
Homework due back by a:	Tuesday
Reading books changed on a:	Monday

My Learning



Year 2
Autumn 1

English



The Jolly Postman follows an unnamed mail carrier as he delivers letters by bicycle to characters from traditional children's stories that are well known in Britain.

Following each page in the story, there is one shaped like an envelope and containing one of the postman's deliveries. Each envelope is opened and the letter is read to give us new clues.

Maths

Place value with numbers up to 100.

Formal written methods for all 4 calculations (+ - x and ÷)

Examples:

$$\begin{array}{r} 53 \\ / \quad \backslash \\ 50 + 3 \end{array}$$

$$42 = 40 + 2$$

$$42 = 30 + 12$$

$$\begin{array}{r} 33 \\ + 50 \\ \hline \end{array}$$

$$\begin{array}{r} 56 \\ - 33 \\ \hline \end{array}$$

Topic

Mowmacre Detectives!



What will we be learning about?

We will be investigating Mowmacre Hill, thinking about what it used to be like and comparing it to what it is like now.

These characters might get a look in too...

The children will be able to design something new for Mowmacre Hill and will be able to share their new learning to you at the end of the topic.

